

# Kelverion

## Integration Pack for Microsoft System Center 2012

### More Automation for System Center 2012

The Integration Pack for Microsoft System Center 2012 is compliant with Microsoft System Center 2012 R2 Orchestrator or System Center 2016 Orchestrator.

Microsoft provides a suite of Orchestrator Integration Packs for their System Center 2012 toolset, however, these Integration Packs lack certain capabilities that many Orchestrator users desperately need to automate their System Center 2012 deployments.

Therefore Kelverion have released this Integration Pack which adds over 50 automation tasks to the existing Microsoft System Center 2012 Integration Pack capabilities.

Each Integration Pack activity delivers a range of automation tasks for a specific System Center 2012 product. This release covers the following products:

- Configuration Manager 2012
- Operations Manager 2012
- Service Manager 2012
- Azure Compute
- Azure Automation
- Service Management Automation (SMA)

The Integration Pack contains an Activity for each of the System Center 2012 products listed above. Each Activity offers several product specific, selectable tasks. Each task has its own set of parameters and filters.

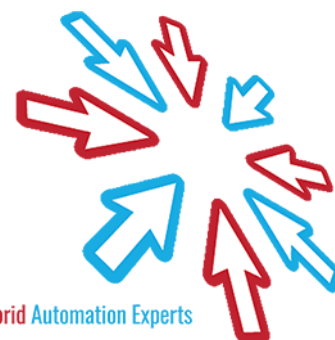


### IP FOR SYSTEM CENTER ACTIVITIES

**Azure Automation** Start Automation Runbook  
Stop Automation Job  
Resume Automation Job  
Suspend Automation Job  
Get Automation Runbook  
Get Automation Job

**Azure Compute** Add VM Endpoint  
Get VM Endpoint  
Get VM Endpoint ACL,  
Get VM Image  
Remove VM Endpoint  
Set VM Availability Set  
Update VM Endpoint  
Update VM Endpoint ACL

**SMA** Get Job  
Get Runbook  
Resume Job  
Start Runbook  
Stop Job  
Suspend Job



Cloud & Hybrid Automation Experts

# Kelverion

## IP FOR SYSTEM CENTER ACTIVITIES CONTINUED

### SCCM

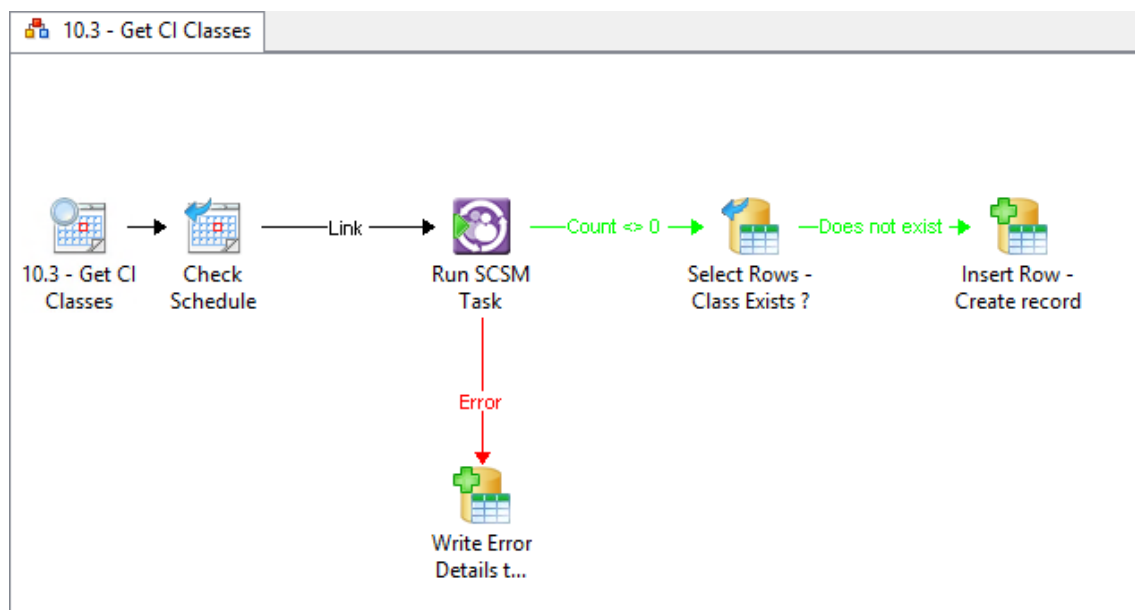
- Add Distribution Point
- Add Software Update To Group
- Create Package
- Create Program
- Create Site System Server
- Create Software Update Group
- Get Device
- Get Distribution Point
- Get Package
- Get Site System Server
- Get Software Update
- Get Software Update Group
- Import Computer
- Remove Device
- Start Content Distribution
- Synchronize Software Update
- Update Package
- Update Software Update Group

### SCOM

- Get Management Pack
- Get Rule
- Get Monitor
- Get Class
- Get Class Instance
- Get Task
- Get Task Result
- Install Agent
- Reset Monitoring State
- Start Task

### SCSM

- Get Base Configuration Item
- Get Class
- Get Class Instance
- Get Relationship
- Get Relationship Instance
- Remove Class Instance



**K**elverion are a Microsoft System Center and Cloud Partner who offer Integration Packs and Tools to enhance System Center Orchestrator and Azure Automation and deliver System Center implementation services.

Find out more at <http://www.kelverion.com>



Cloud & Hybrid Automation Experts