

Kelverion

Integration Pack for IE Automation

User Interaction Automation with Web Apps

The Kelverion Integration Pack for IE Automation is a compliant integration for Microsoft System Center 2012 R2 Orchestrator or System Center 2016 Orchestrator.

The Integration Pack offers the ability to automate user interaction with a web application via Internet Explorer versions 6, 7, 8, or 9.

Increasingly Applications interfaces are via Web/HTML based User Interfaces. Entering data or interacting with the application involves typing in fields in a Web Form and clicking buttons. This makes interacting with these applications a manually intensive and time consuming activity.

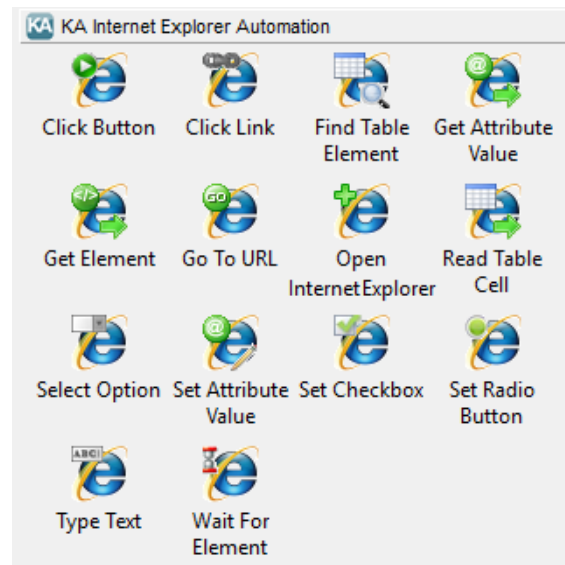
The Integration Pack delivers a range of re-usable objects to allow automatic interaction with this Web based applications via Microsoft Internet Explorer.

The Integration Pack delivers a range of re-usable activities to automate IT-Functions, for example:

Automated Web Form Population

Automated requests of Laptop Machines from a hardware supplier directly from an internal Service Requests process by selecting assets to be supplied and entering data directly into their Web based Supplier Portal.

IP FOR IE AUTOMATION ACTIVITIES



Kelverion are a Microsoft System Center and Cloud Partner who offer Integration Packs and Tools to enhance System Center Orchestrator and Azure Automation and deliver System Center implementation services.

Find out more at <http://www.kelverion.com>



Cloud & Hybrid Automation Experts